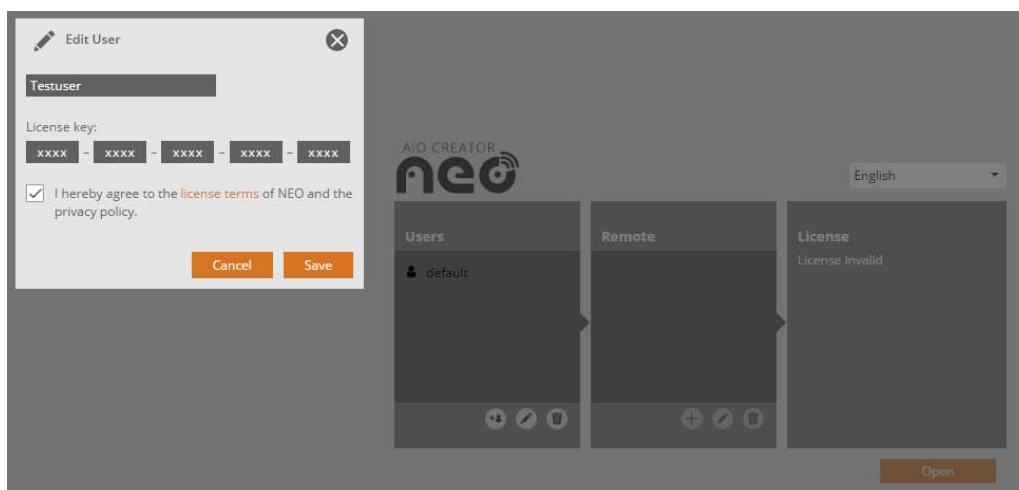




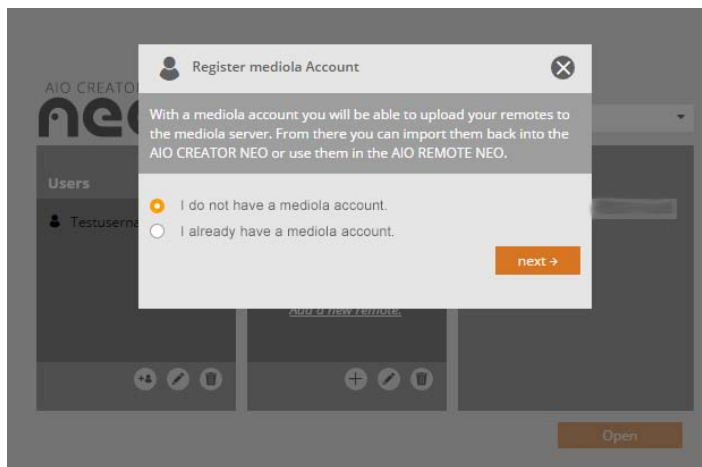
AIO CREATOR NEO

How to import SteckerPRO configurations to AIO CREATOR NEO

1. Go to the [mediola online shop](#) and purchase the software license for AIO CREATOR NEO Steckerpro Edition.
→ The license key will be sent to you by e-mail.
2. After you received the license key, download and install the AIO CREATOR NEO software.
3. Now start the AIO CREATOR NEO. First the "Edit User" dialog appears , where you have to make the following entries:
 - a. User name
 - b. License key
 - c. Accept license terms & conditions

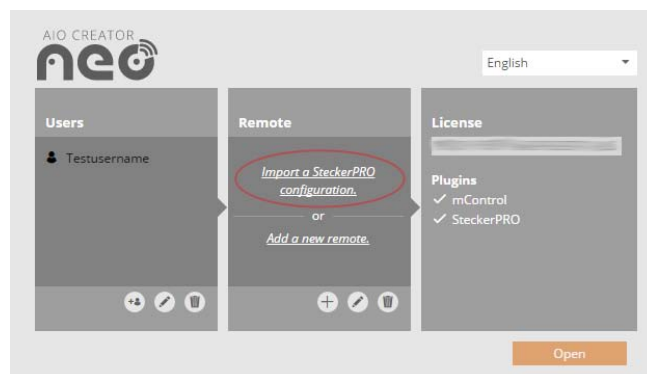


- In the next step you have to register for a mediola cloud server account (if did not already in your SteckerPRO-App).

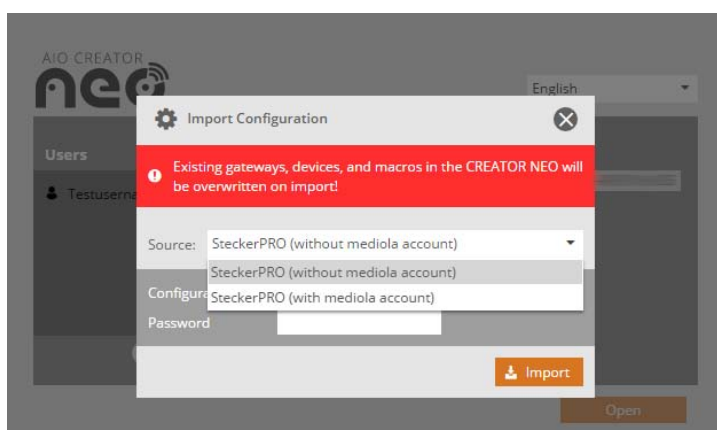


- You can skip this point, if you already have a mediola account.
- If you do not have a mediola account yet, please register.

- Now you advance to the AIO CREATOR NEO startscreen, where you have to click on "Import a SteckerPRO configuration".



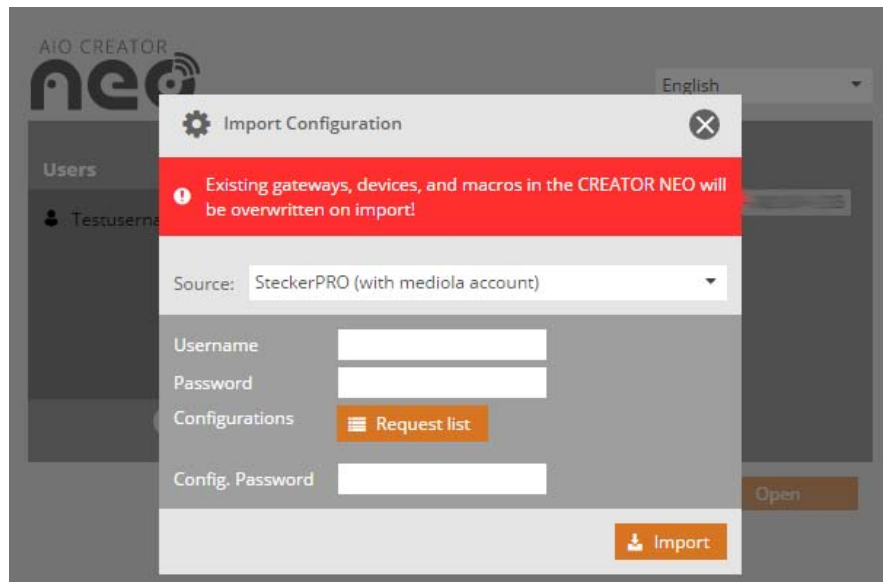
- The "Import configuration" dialog opens. Here you should select a "source" first. You can choose between the following two source options:



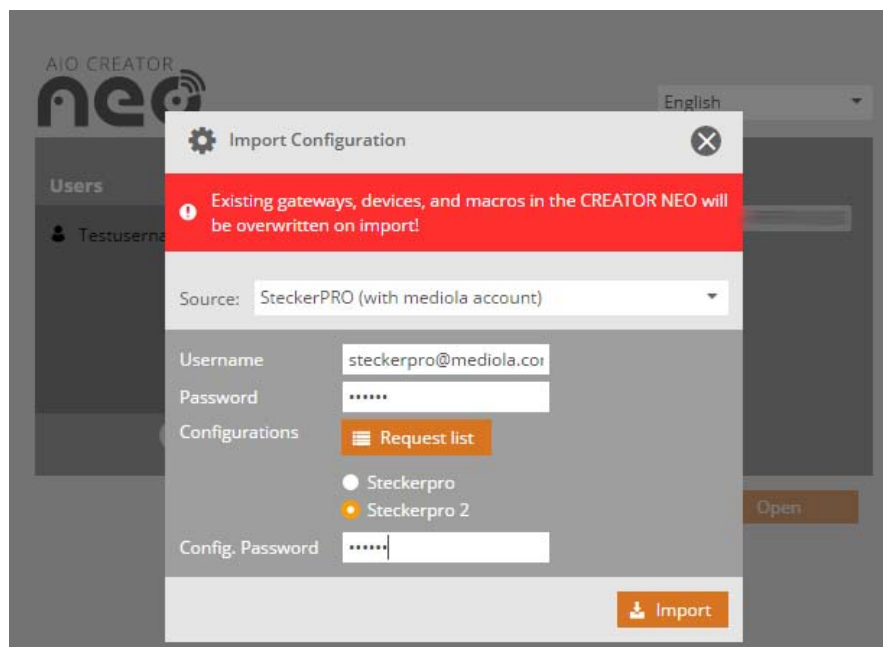
a. Source "**SteckerPRO (with mediola account)**":

Please select this source, if you use your SteckerPRO app already with a new mediola cloud server account, which offers the possibility to store multiple configurations with one account.

→ In this case insert username (e-mail-address) and password for your mediola account.



→ Then click on "request list". A list of all your configurations will appear. Select the configuration you want to import.

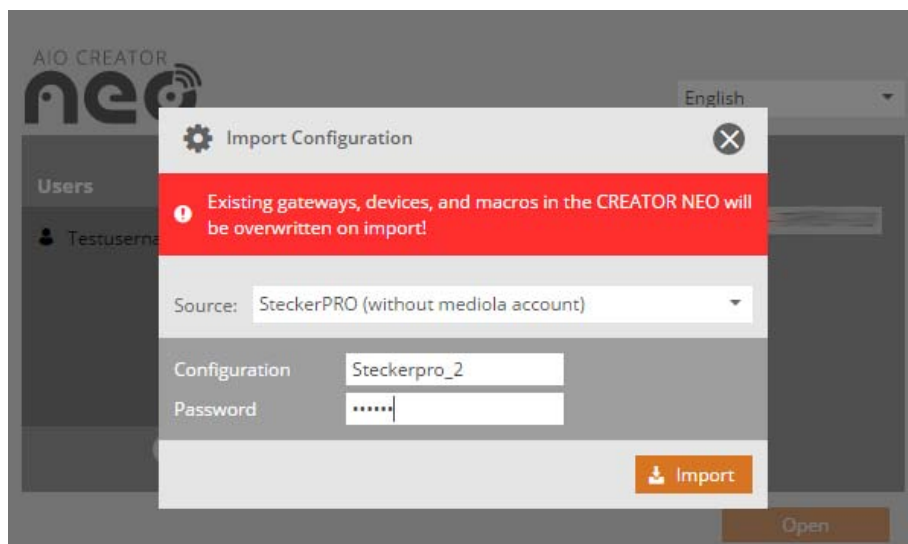


→ Now enter the configuration password

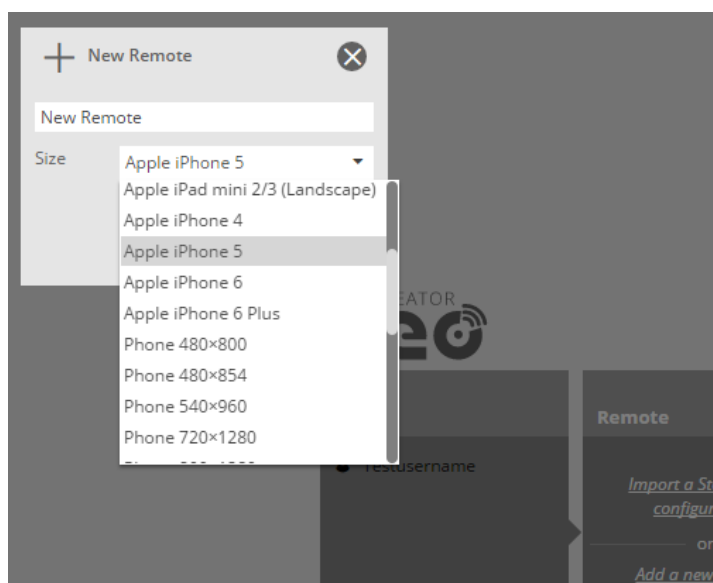
→ Finally click on "import"

b. Source "**SteckerPRO (without mediola account)**":

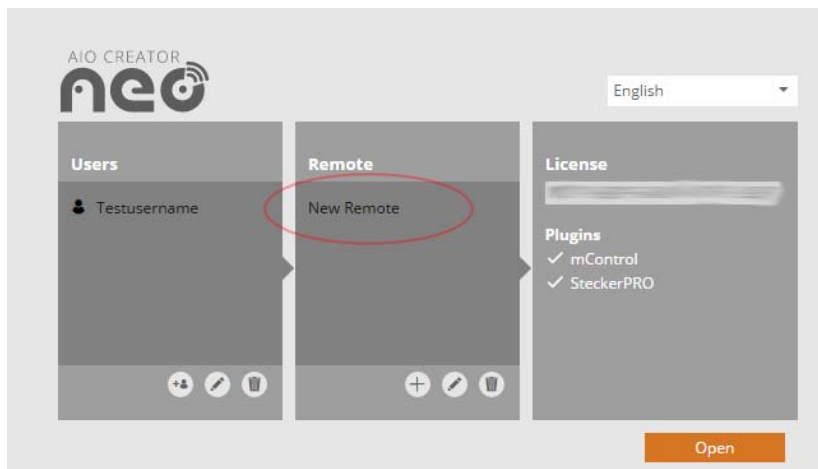
Please select this source, if you don't use your SteckerPRO app already with a new mediola cloud server account. That means that you save your configuration only by configuration name and password. Enter both and submit with "Import".



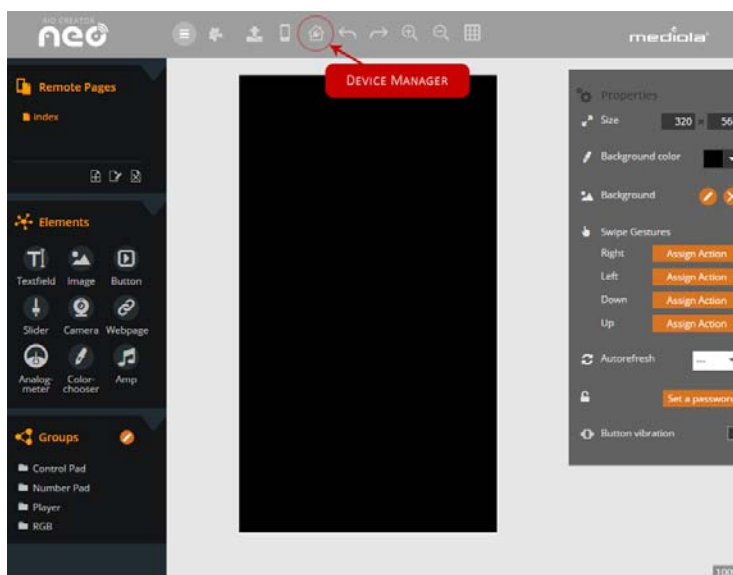
7. Now your configuration has been imported to AIO CREATOR NEO and you have to create a new remote file. A remote file is a personalized remote control for the NEO app (similar to configurations of SteckerPRO). Enter a name and select the mobile device you want to use for "Size" (in the example: iPhone 5). If your model is not listed, you can select the screen resolution of your mobile device or enter the size manually. Finally click on "create".



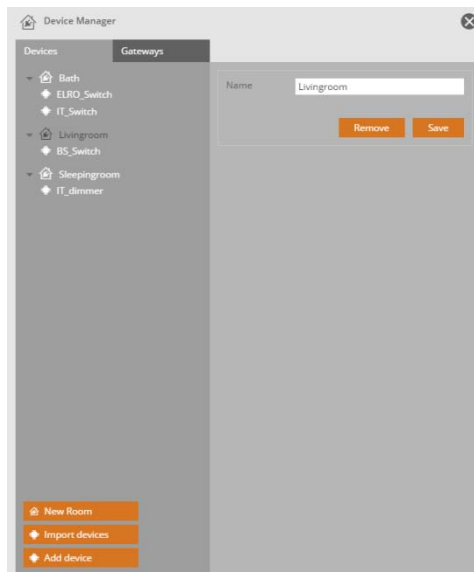
- The new remote file has been created and will be listed in the remote list box. Click on "open" to open the file in the editing mode.



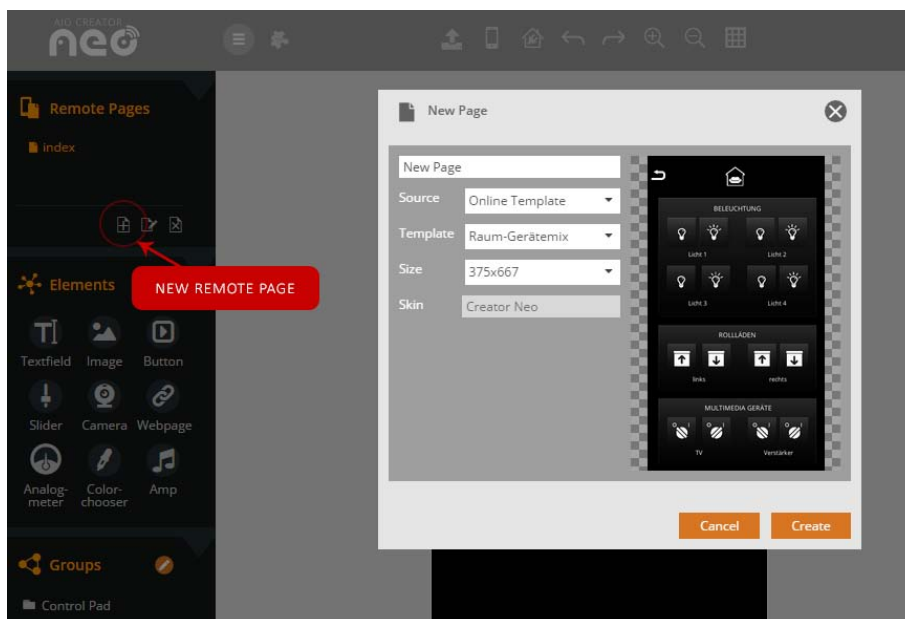
- At this stage the file only consists of one empty remote page in the screen resolution you have selected.



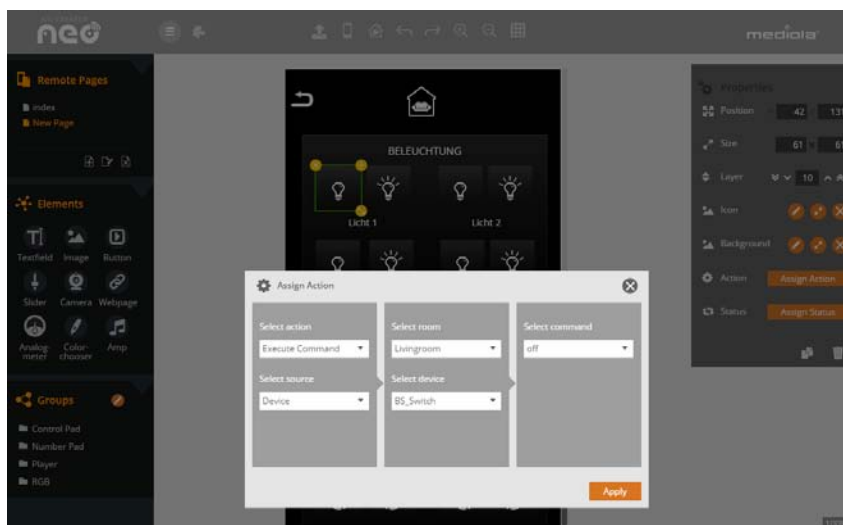
But all your SteckerPRO-devices have been already imported to the NEO device manager (picture below) and can be assigned to buttons in the next step.



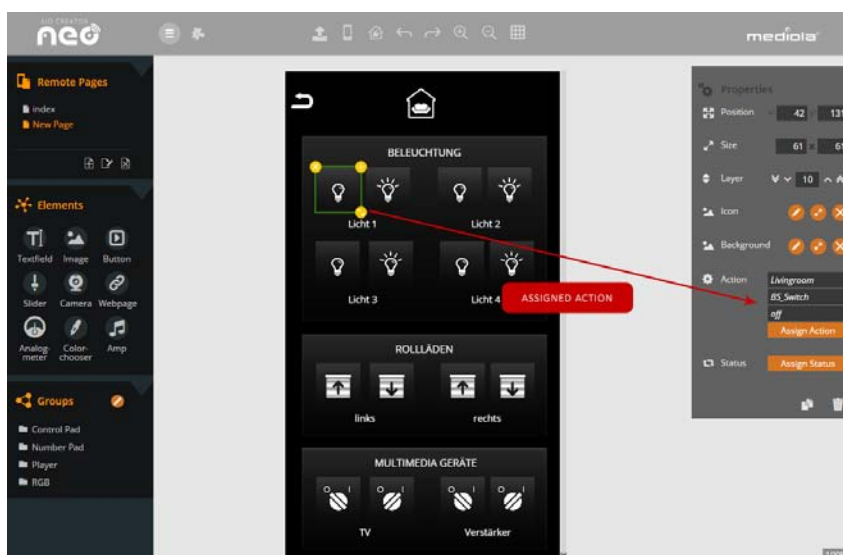
10. To assign functions to button elements you have to add a button element to the remote page first. Alternatively you can integrate one of the provided online template pages with included button elements (in the example: Raum Gerätemix).



Now you can select a button element on the remote page and assign an action in the properties menu on the right side.



11. To assign more actions to other buttons just select another button and repeat the assignment procedure described in step 10.

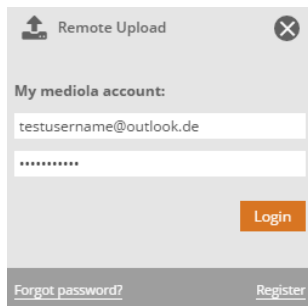


12. In addition you can add more remote pages easily. To create a navigation between the pages (similar to websites) you can assign "switch page" actions to button elements. This way you will be able to create your totally personalized remote control app in no time.

13. After you have finalized your remote file, please upload it to the mediola cloud server by clicking on the upload icon in the topbar.



Now enter your credentials for your mediola account and upload your remote.



The image shows a 'Remote Upload' dialog box with a close button (X) in the top right corner. Below the title bar, there is a section labeled 'My mediola account:' containing two input fields: the first contains the email address 'testusername@outlook.de' and the second contains a masked password '*****'. An orange 'Login' button is positioned to the right of the password field. At the bottom of the dialog, there are two links: 'Forgot password?' on the left and 'Register' on the right.

14. Finally you have to install the free AIO REMOTE NEO app on your mobile device, enter your mediola cloud server credentials in the app, download your remotes to the app and start controlling your home the smart way.